

CRP/Δ

CENTRE
RÉGIONAL DE LA PHOTOGRAPHIE
HAUTS DE FRANCE



40 YEARS OF PHOTOGRAPHY AT CRP/

SEPT. →
DEC. 2022

PRESS
RELEASE

MULTISITE EXHIBITION
IN HAUTS-DE-FRANCE



40 years of photography at CRP/

September ... December 2022

Press contact

Fanny Leroux
communication@crp.photo
+ 33 [0]3 27 43 57 97

General curator

Audrey Hoareau, Director of the CRP/
assisted by Clara Verwaerde

CRP/ Centre régional de la photographie Hauts-de-France

Place des Nations
59282 Douchy-les-Mines
France

www.crp.photo



@crpnord

Complete programme:
(subject to change)

www.crp.photo/en/exposition/40-years

Visuals available upon request

communication@crp.photo

The CRP/ Centre régional de la photographie Hauts-de-France is celebrating its anniversary.

In forty years, it has become an essential place, a reference for contemporary photography, in France and internationally.

On this occasion, we offer you a unique journey through the collections thanks to a large multisite exhibition organized with fifteen partner locations throughout the Hauts-de-France.

A way to highlight the strength of our network, our involvement in the territory and our exceptional photographic collection.

At the same time, enjoy a varied and accessible cultural program punctuated by highlights: meetings with artists, special tours, workshops, courses, portfolio readings,... Everyone can experience the CRP/ event anywhere in the region. Festivals, museums, national stages, heritage, artistic and tourist sites, all celebrate this event with us.

Forty years is a milestone. While CRP/ looks back to its past to measure what has been done, it seizes this ideal moment to project itself towards new perspectives and an ambitious future!

Audrey Hoareau

Director of the CRP/



© Vincent-Everarts

As part of this anniversary, the CRP/ is launching a research project on its history and origins, with the historian of photography and lecturer in Arts, Raphaële Bertho.

«An art center of regional scope, with national and international influence, installed in the former post office of a small town in northern France, always arouses curiosity. Why Douchy-les-Mines? To try to understand how and why an art center dedicated to photographic creation was established, 40 years ago now, in a town in the Valenciennes region, it is necessary to go back to the genesis of a project that came into being at the end of the 1970s, at the crossroads of the movement for recognition of the medium and the profound crisis that was shaking this region.

The crisis was that of the steel industry and the closure of large industrial sites, including the one in Denain, a few kilometers from Douchy-les-Mines. It was the end of a history that had shaped the territory, its topography and its social physiognomy, for over a century. The creation of the Centre régional de la photographie is part of a broader cultural movement based on a desire to capture a threatened memory combined with the desire to reconquer new imaginary. The project, led at the time by Pierre Devin, is both artistic and political: by using the «bastardisation» of photography, a popular and contemporary art, it is a question of making the link between the experience of the inhabitants of the «Black Country» and the most demanding photographic creation.

Over the years, the Centre régional de la photographie has established itself as an original institution with both local and international influence. The development of the *Mission Photographique Transmanche* over nearly twenty years (1988-2005), which accompanied the «construction site of the century», that of the Channel Tunnel, left a lasting impression on people's minds and on the history of photography. A large-scale project that should not, however, make us forget the commitment to support creation and distribution through exhibitions and publications, but also the intense investment in actions aimed at the public, the organization of training courses, workshops, residencies...

In forty years, the Centre régional de la photographie has established itself in the local and international cultural landscape. The association, born in the energy of the promotion of a photographic art in the 1980s, is today recognized as a center of contemporary art of national interest. Over the decades, the structure and its teams have been able to adapt to changes in the photographic world while maintaining a singular identity. This identity is embodied in the center's collection, an exception for an art center. The thousands of works testify to the richness and profusion of this photographic history, both artistic and political.»

Raphaële Bertho

Monument

40 years of photography at CRP/
CRP/, Douchy-les-Mines (59)

from 17 September to 06 November 2022

opening and birthday party

Saturday 17 September - 12:30pm

round table about the collections

with Raphaële Bertho, historian of photography
Sunday 09 October, 3pm

live on our social medias « Answer to an open call »

with Anaïs Viand, Fisheye journalist
Tuesday 11 October, 4pm

portfolio reading

with the Bayard Club, actors of the photography in Hauts-de-France
Saturday 15 October, 10am - 5pm

Wednesday LaBOX

Wednesdays 5 and 22 October, 2pm - 4pm

workshop Leica x CRP/

Weekend of 05 and 06 November

opening hours

Tuesday - Friday: 1pm - 5pm
weekends and holidays: 2pm - 6pm

adress

place des nations
59292 Douchy-les-Mines

press contact

Fanny Leroux
communication@crp.photo

www.crp.photo

As an experimental laboratory for the medium, the CRP/ has always been committed to defending a demanding and radical photography. The collection reflects this commitment to the authors and a constant action in favor of an eclectic creation. Residencies, commissions or photographic missions, the CRP/ owes the richness of its collection to its ability to produce with photographers. As a prelude or introduction to a series of sixteen exhibitions devoted to the collection, *Monument* marks the event by honoring those who have contributed to the history of photography, as well as that of this special place: **Josef Koudelka, Stanley Greene, Mario Giacomelli, Zofia Rydet, Ângela Ferreira, Isabelle Le Minh...**



La buona terra, 1964-1965, Artothèque du CRP/

© Mario Giacomelli

CRP/4 ✱

CENTRE
RÉGIONAL DE LA PHOTOGRAPHIE
HAUTS-DE-FRANCE

Littoral (Coastline)

40 years of photography at CRP/

Palais des Congrès, Le Touquet-Paris-Plage (62)

from 1st September to 06 November 2022

opening

Thursday 1st September - 6pm

opening hours

Wednesday and Friday
10am - 12pm and 2pm - 5pm
free access on event days

address

place de l'Hermitage
62520 Le Touquet-Paris-Plage

press contact

Laurence Providence
providence.laurence@ville-letouquet.fr

www.letouquet.com

The sea is an inexhaustible source of inspiration for artists. At the beach, in industrial or pleasure ports, photography captures the calm of the shores as much as the effervescence of seaside sites. For the first collaboration of the CRP/ with the city of Le Touquet, the subject of the sea was obvious, as it is so present in the art center's collections. **Martin Parr, Frédéric Cornu, Michel Kempf, Alexandre Christiaens, Marilyn Bridges** and many others, have focused on this space where life and landscapes are articulated differently from elsewhere. In this collective exhibition, come and discover a selection of original photographs from the years 1980-1990 that smell of sea spray.



New Brighton, The Last Resort, 1984,
Artothèque du CRP/
© Martin Parr - Magnum Photos

Les terrils de John Davies (John Davies' slag heaps)

40 years of photography at CRP/

Centre historique minier, Lewarde (59)

from 05 September to 09 October 2022

artist meeting with John Davies

Sunday 18 September, 3pm

opening hours

everyday: 9am - 5:30pm

adress

Fosse Delloye
rue d'Erchin
59287 Lewarde

press contact

Karine Sprimont
ksprimont@chm-lewarde.com

www.chm-lewarde.com

Located on the former Delloye pit, the Lewarde Mining History Center is the largest mining museum in France. At the heart of the museum's itinerary, the exhibition dedicated to **John Davies** presents a selection of his photographic work on the slag heaps of the North. Attracted by the topography of the area, the English photographer, himself the son of a miner, has endeavored to document these very special landscapes, remnants of industrial history. What John Davies observes is also the evolution of the «Black Country» and these places that see life and vegetation regain its rights. Nature reserves, ski areas, leisure zones or even experimental vineyards, the slag heaps are being reinvented.



Le clos et l'ouvert (The closed and the open)

40 years of photography at CRP/

Espace Le Carré, Lille (59)

from 09 September to 09 October 2022

opening

Thursday 08 September, 7pm

curator visit with Audrey Hoareau

Thursday 22 September, 5pm

artist meeting with Marie-Paule Nègre

Thursday 06 October, 6pm

opening hours

Wednesday - Saturday: 2pm - 7pm

Sunday: 10am - 1pm and 3pm - 6pm

address

30 rue des Archives
59800 Lille

press contact

Laurie Chevrot
lchevrot@mairie-lille.fr

elc.lille.fr

The 1990s marked the decade of major works in the North. At the crossroads of an opening Europe, the capital of the region was transformed and modernized. At the Espace Le Carré, the CRP/, in the heart of Lille and thanks to its exceptional collection, looks back at this pivotal period. Between renewal and destruction, photography captures mutations, flows and impressions generated by these new horizons.

Borrowed from Bergson, the title refers to this opposition in which photographic artists constantly evolve: the act of documenting the world while printing a singular look on it.

With the works of **Françoise Nuñez, Jean-Louis Garnell, Marie-Paule Nègre, Max Lerouge, Michael Scheffer, Ralph Hinterkeuser...**



Chantier de percement du tunnel sous la Manche, Mission Photographique Transmanche n°4, 1988, Collection du CRP/, © Jean-Louis Garnell, Adagp, Paris, 2022

Espace
Le
Carré



En miroir

40 years of photography at CRP/

Villa Marguerite Yourcenar, Saint-Jans-Cappel (59)

from 10 September to 27 November 2022

opening hours

weekend: 2pm - 6pm
weekdays by appointment

address

2266 route du Parc
59270 Saint-Jans-Cappel

press contacts

Anaïs Vandeven - anais.vandevenne@lenord.fr
Audrey Vernon - audrey.vernon@lenord.fr

lenord.fr

The Villa Yourcenar is a place where writers' residencies are held and where the conditions for writing are ideal. Secluded and peaceful, on the Mont Noir in the heart of Flanders, this literary center hosts an exhibition in which photography becomes the collection of introspections. Photography and literature have always been allies. **Bernard Plossu** confirms this with the series *Paris-London-Paris* co-signed with Michel Butor. Between diary and poetry, the images take us on a journey by train and by words. The journey is more enigmatic for **Yves Guillot**, who, influenced by psychoanalysis, collects impressions of daily life and clues in *La Logeuse*, a series that took him ten years to create.



Paris-Londres-Paris,
Mission Photographique Transmanche n°1,
1988, Collection du CRP/
© Bernard Plossu

En bonne compagnie ! (In good company!)

Collective portraits in the collections of the Familistère de Guise and the CRP/

Le Familistère de Guise (02)

from 15 September to 13 November 2022

opening

Thursday 15 September, 3pm

photo studio workshop

Saturday 17 and Sunday 18 September, 2pm
Thursdays 27 October and 3rd November, 2pm

guided tour « In good company! »

every weekend (outside school vacations), 5pm
everyday (during school vacations), 5pm

Info and reservations > Familistère

opening hours

everyday: 10am - 12:30pm and 1:30pm - 6pm

adress

Place du Familistère
02120 Guise

press contact

Maxime Dequecker
maximedequecker@familistere.com

www.familistere.com

By uniting their collections, the Familistère de Guise and the CRP/ compare the work of two photographers who portrayed their community: **Marie-Jeanne Dallet** (1872-1941), a young Familistère resident who took up photography to represent the population and institutions of the «Social Palace» shortly before 1900; and **Kasimir Zgorecki** (1904-1980), a former boilermaker who became a professional photographer and whose studio immortalized the Polish diaspora in the Pas-de-Calais region during the 1930s. For both of them, the collective portrait is a means of affirming the identity of a social group. Their images, whose codes are inherited from the pictorial tradition, show what makes a community. The popular character of the subjects, the sociological intention of the portraits as well as the intimacy of the artist with her models make all the originality of this double corpus of photographs.



Sans titre, 1930, Collection du CRP/
© Kasimir Zgorecki, Adagp, Paris, 2022

LE
FAMILISTÈRE
DE GUISE

Une collection vivante ! (A living collection!)

40 years of photography at CRP/

Le Phénix, Valenciennes (59)

from 16 September to 17 December 2022

opening

Friday 16 September - 6pm
presentation of the works, followed by La
Fabrique du Commun, debate evening by the
Kom.Post collective.

Free on registration > Le Phénix

opening hours

Thursday - Saturday : 12pm - 6pm
and on show nights

adress

boulevard Henri Harpignies
59300 Valenciennes

press contact

Estelle Garnier
garnier@lephenix.fr

www.lephenix.fr

The CRP/ collection is not static! This invaluable collection is constantly enriched by acquisitions, donations, residencies, commissions, and successive collaborations with visual artists, visual artists, and photographers from around the world.

At Le Phénix, the CRP/ proposes to come back on the last pieces which joined its fund these last years. An opportunity to discover a variety of contemporary and original photographic writings, such as those of the American **David Schalliol**, the Brazilian duo **Angela Detanico & Rafael Lain**, the Swiss **Peter Knapp** or the French-Algerian **Katia Kameli**.



Zazie pour Textile International, 1968,
Artothèque du CRP/
© Peter Knapp

Faire part d'humanité (To share humanity)

40 years of photography at CRP/

La Cité des Électriciens, Bruay-La-Buissière (62)

from 17 September to 27 November 2022

opening

Friday 30 September, 6pm

opening hours

Wednesday - Sunday: 1pm - 6pm

address

rue Franklin
62700 Bruay-La-Buissière

press contact

Aurélie Rognon
aurelie.rognon@citedeselectriciens.fr

www.citedeselectriciens.fr

Last born of the cultural and tourist sites of the mining basin, the Cité des Électriciens aims to raise awareness of the life of the cities and landscapes of this territory, through their representations, imaginary and associated stories.

This exhibition of photographs taken from the art library and the collection of the CRP/ (**Christiane Barrier, Jill Hartley, Jean-Pierre Gilson, Pascal Dolémieux...**) presents portraits, faces of all horizons, all ages and all conditions.

By welcoming the gaze of the other, in one's own home, in the whole of the coron - witness housing, residences for artists, tourist lodgings and inhabitants, the CRP/ and the Cité des Électriciens join forces to renew a promise that is as essential as it is engaging: to share humanity.



Le carnaval de Douai,
1979, Artothèque du CRP/
© Pascal Dolémieux

Le médium à l'épreuve (The medium to the test)

40 years of photography at CRP/

Destin Sensible, Mons-en-Barœul (59)

from 24 September to 06 November 2022

opening

Saturday 24 September, 11:30am

workshop with Baptiste Rabichon, artist

Weekend of 1st and 2nd October

Info and reservations > Destin Sensible

opening hours

Wednesday and Saturday: 3pm - 6pm

adress

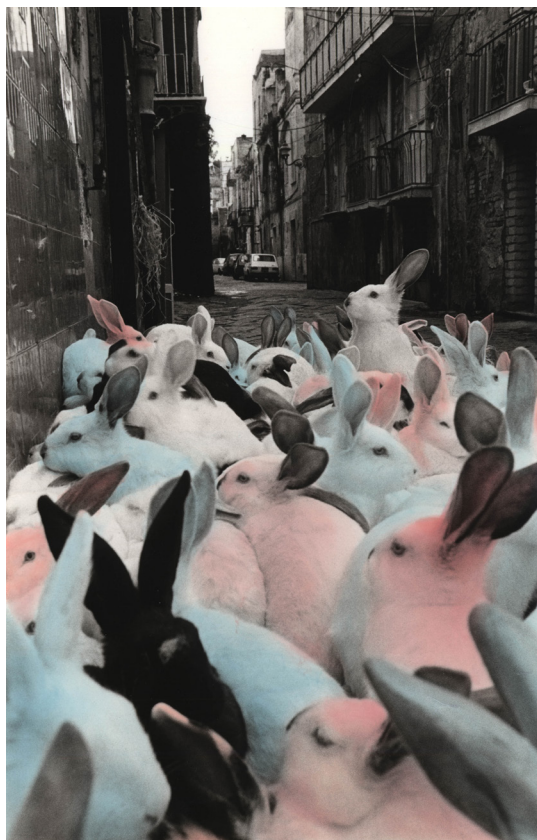
38 avenue Robert Schuman
59370 Mons-en-Barœul

press contact

Horric Lingenheld
horric@mobilabo.com

www.mobilabo.com

Since its origin, photography has offered a boundless field of expression to those who wish to seize it. As a mobile laboratory or a place of exploration, Destin Sensible logically welcomes two of the most surprising series in the CRP's collection, distinguished by their experimental characteristics. The Polish photographer **Wojciech Prazmowski** crosses the threshold from image to object with his *Objects of War* constructed from folded photographs. In *Vittoria 33*, **Gladys** declines the medium in a playful and generous display featuring a wide range of creative processes. Or how these two artists distance themselves from reality to better capture it.



"Case 38", Vittoria 33 Andata e Ritorno, 1987,
Collection du CRP/
© Gladys

DESTIN  SENSIBLE

De part et d'autre (On both sides)

40 years of photography at CRP/

Galerie du Chevalet, Noyon (60)

In collaboration with Diaphane, as part as *Photaumnales'* festival

from 27 September to 31 December

opening

Tuesday 27 September, 6pm

artist meeting

with Anne-Marie Filaire, Emmanuelle Halkin
and Audrey Hoareau

Thursday 24 November, 6pm

opening hours

Tuesday and Thursday: 2pm - 6pm

Wednesday and Friday:

10am - 12pm / 2pm - 6pm

Saturday: 9:30am - 12:30pm and 2pm - 5pm

adress

6 place Aristide Briand
60400 Noyon

press contact

Nathalie Dran
nathalie.dran@wanadoo.fr

www.photaumnales.fr

What is the map without the border? Echoing the theme of the new edition of the *Photaumnales* festival, Cartographies, the CRP/ confronts the vision of four photographers around the notion of the border. Each of them has followed and explored the same line that separates France from Belgium.

In 1985, **Thierry Girard** embarked on an itinerary that stretched from the Rhine to the North Sea, in order to question a Europe in full mutation. **Olivo Barbieri** depicts without rupture this region which has carried the weight of history and the industrial revolution. **Michel Vanden Eeckhoudt** records with subtlety the variations of landscapes and attitudes. **Anne-Marie Filaire** obstinately seeks the expression of this impalpable line and works on its representation.



Risquons-tout, Sur la ligne, Mission
Photographique transmanche n°17, 1994,
Collection du CRP/
© Michel Vanden Eeckhoudt

diaphane
pôle photographique
en hauts-de-france

P H O
T A U
M N A
L E S

Sous la serre (Under the greenhouse)

40 years of photography at CRP/

Les Thermes, Saint-Amand-les-Eaux (59)

from 30 September to 04 December 2022

meeting with Audrey Hoareau

Thursday 3rd November, 5pm

opening hours

Monday - Saturday : 9am - 5pm

adress

1303 route de la Fontaine Bouillon
59230 Saint-Amand-les-Eaux

press contact

Javier García Mendi
javier.garciamendi@chainethermale.fr

www.chainethermale.fr

In this setting, the exhibition becomes a parenthesis, a suspended time conducive to enjoyment. Although each photographer has his own style, the four share a passion for plants. They praise the slowness imposed by the rhythm of the countryside, that of the grass growing under their feet. For a whole year, **Bernard Joseph** photographs the delicacy of his father's garden, a former coal miner. **Edith Roux**, commissioned to work on the Hainaut cross-border nature park, records the evolution of the same landscape season after season thanks to the principle of renewal. As for **Olivier Mann**, he extends the utopia that photography offers him, to freeze time through his mastery of the elements. The orchid of **Denis Brihat**, master of the print, signs the apotheosis of this tribute to the fragility of nature and its sensitive beauty.



Orchidée, 1987, Artothèque du CRP/
© Denis Brihat



CHAÎNE THERMALE DU SOLEIL

Corps lutte (Body struggle)

40 years of photography at CRP/

ésad, école supérieure d'art et de design, Valenciennes (59)

from 13 October to 13 December 2022

opening

Thursday 13 October, 6:30pm

closing

Tuesday 13 December, 6:30pm

opening hours

Monday, Wednesday, Friday: 9am - 6pm
Tuesday, Thursday: 9am - 8pm

address

132 avenue du Faubourg de Cambrai
59300 Valenciennes

contact press

Gwenaëlle Sahouani
communication@esad-valenciennes.fr

www.esad-valenciennes.fr

Since its origin, photography has accompanied women and men in struggle. But what struggle does the body express? What does the photographer seize when he poses the moment filled with the body's impulse? *Corps Lutte* is a photographic journey that shows the moment when, beyond the individual will, the joyful incarnation of life is expressed. The exhibition deliberately confronts the expression of joy and struggle in photographic images that reveal the all too human. It illustrates how articulated bodies or articulating in a movement, make tangible a tension at work, an energy in a demonstration of strength or rupture. With the works of : **Claude Dityvon, Jean Marquis, Adriana Leotido, Anthony Haughey...**

Curator: Nawal Bakouri, director of ésad



Boulevard Saint-Germain, Paris, mai 1968,
Collection du CRP/
© Claude Dityvon

Berlin

40 years of photography at CRP/
Leica Store, Lille (59)

from 14 October to 13 November 2022

opening

Friday 14 October, 6pm

film projection

« Foto : Ostkreuz » at Cinéma l'Univers, Lille
Monday 7 November, 7:30pm

opening hours

Tuesday - Saturday: 10am - 7pm

address

10 rue de la Monnaie
59000 Lille

press contact

Vincent Levrier
vincent.levrier@leica-camera.com

www.leica-camera-france.fr

In the gallery space of the Leica store, in the heart of Old Lille, the exhibition *Berlin* presents two great figures of East German photography face to face. **Sibylle Bergemann** and **Arno Fischer** each deliver their portrait of Berlin at different times. Two fragmented, sculptural visions that come together and testify, through their powerful and complementary photographic writing, to the consequences of history on a capital city and a country that has slowly risen again.

In cooperation with the **Goethe-Institut Lille**.



Das Denkmal, The Monument, 1986, Collection
du CRP/
© Estate Sibylle Bergemann, Ostkreuz



Working Class Hero

40 years of photography at CRP/ Le Silo U1, Château-Thierry (02)

from 20 October to 16 November 2022

opening and meeting with Claire Chevrier
Thursday 20 October, 6pm

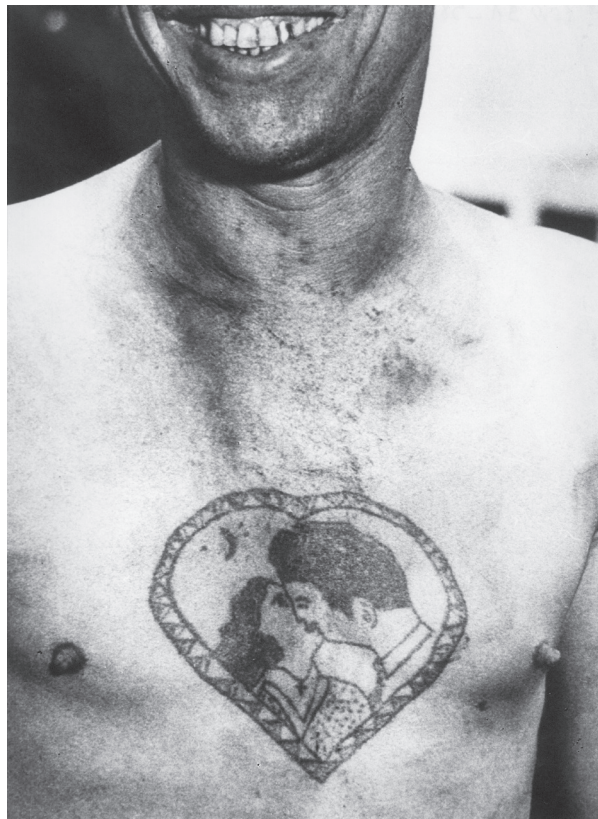
opening hours
Wednesday, Friday, Saturday: 2pm - 5:30pm

address
53 rue Paul Doucet
02400 Château-Thierry

press contact
Thyphaine Granger
thyphaine.granger@ville-chateau-thierry.fr

www.chateau-thierry.fr

Industry is widely represented in the collections of the CRP/. Beyond the machines and factories, it is above all the humans that the artists have endeavored to immortalize through photography. Marked physicality, imposing, codified dress and gestures, behind the physical characteristics worn by this despised figure as much as mystified, it is the courage and pugnacity that we read in hollow. A true microcosm, the world of the worker fascinates by its powerful symbolism, so photogenic, and by its capacity to translate the harshness of an entire society as well as the violence of its system. A journey through a panel of works representative of several eras that shows a form of continuity in time: **François Kollar** with *La France Travaille* in the 1930s, **Bruce Gilden** in the middle of the 1990s, or **Claire Chevrier** in 2010.



L'amour, un ouvrier en camp de construction,
1960, Collection du CRP/,
© Jerzy Lewczynski

LE SILO
PÔLE D'EXPOSITIONS TEMPORAIRES

**Château
thierry**
CITÉ POÉTIQUE

Jubilé ! (Jubilee!)

40 years of posters and photography at CRP/

Office culturel, Arras (62)

from 28 October to 18 November 2022

opening

Friday 28 October, 6pm

opening hours

Monday - Friday

9:30am - 12pm and 2pm - 6pm

Saturday: 9:30am - 12pm and 2pm - 5:30pm

closed the first Saturday of the month

adress

2 rue de la Douzième

62000 Arras

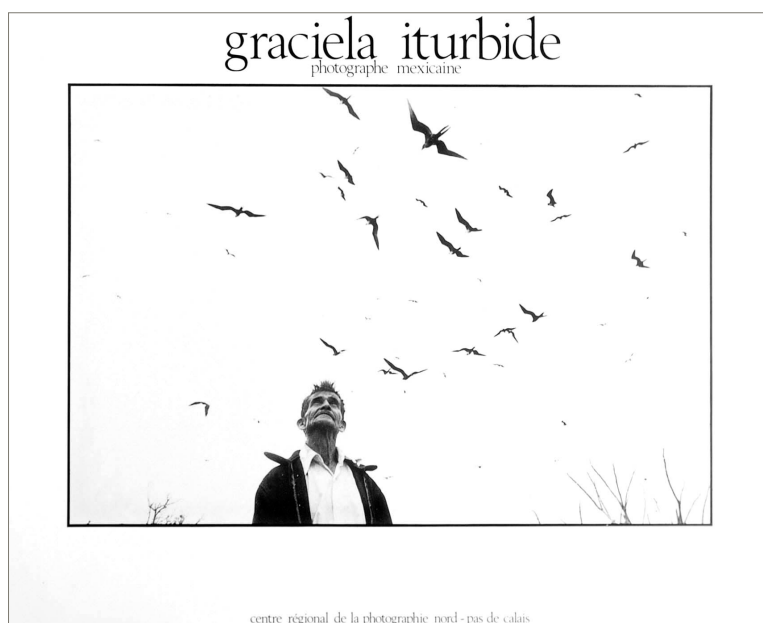
press contact

Nathalie Quinet

administration@office-culturel-arras.fr

www.arras.fr

In 40 years, several dozen posters have been published to promote the events of the art center. These different communication supports constitute a memory of the history of the place and embody four decades of existence. At the Cultural Office, in this high associative place of Arras installed since 2016 in the former Hospice Saint-Pierre, this exhibition traces the great moments of the CRP/. An opportunity to cross various modes of presentation and to find with nostalgia the graphic design of certain times. It also allows us to remember the collaboration of great photographers with the CRP/ such as **Harry Gruyaert**, **Robert Frank**, or **Marc Garanger**.



Affiche d'exposition au CRP/
Graciela Iturbide, photographie mexicaine

Haut en couleur (Highlighted in color)

In the collections of the musée des beaux-arts of Cambrai and the CRP/
Musée des beaux-arts de Cambrai (59)

from 26 November 2022 to 26 February 2023

opening

Saturday 26 November, 11am

family workshop - Kaleidoscope

Wednesdays 15 and 22 February 2023

opening hours

Wednesday - Sunday
10am - 12pm and 2pm - 6pm

address

15 rue de l'Épée
59400 Cambrai

press contact

Alice Cornier - Director
acornier@mairie-cambrai.fr

www.villedecambrai.com

Around the joyful theme of color, a dialogue is woven between two collections: the abstract geometric collection of the musée des beaux-arts of Cambrai and the photographic collection of the CRP/. Aimed at a young audience with a scenography at the height of a child, this exhibition confronts supports and subjects to raise the question of forms, flat areas and their perception. Between image and object, how do artists take advantage of the infinity of the chromatic prism to develop their mode of expression? While abstract painters have been renewing the approach to color since the beginning of the last century, it was not until the 1980s that artistic photography was deployed and asserted itself with all the colors of the world.

With **John Batho, Jean-Pierre Parmentier, Wolfgang Zurborn, Martine Mouchy...** in dialogue with Richard Paul Lohse, Horacio Garcia Rossi, Geneviève Claisse, Günter Fruhtrunk, Marie-Thérèse Vacossin, madé, Christian Roeckenschuss...



Couleurs de fête, 1979, Artothèque du CRP/
© John Batho



ville de Cambrai



As part of the 40 years...

On the occasion of CRP/'s 40th anniversary, the art center is carrying out a commission for professional photographic artists.

On April 27, 2022, four photographers were selected by a jury meeting at CRP/ composed of :

- Thierry Bigaignon, Bigaignon Gallery, Paris
- Raphaël Dallaporta, Artist
- Juliette Guépratte, Director of Strategy,
in charge of contemporary art at the Louvre-Lens Museum
- Audrey Hoareau, Director of the CRP/
- Raphaëlle Stopin, Director of the Centre photographique de Rouen
- Jean-Marc Vantournhout, President of the CRP/.

The four selected artists are:

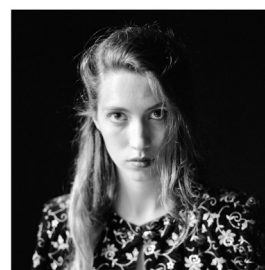
Clément Brugger, Isabella Hin, Hideyuki Ishibashi and Apolline Lamoril



Echoing the 10th anniversary of the inclusion of the Bassin Minier on the UNESCO World Heritage List, the winning projects all have a link with this emblematic territory of the region.

As part of its mission to support and accompany creation, the CRP/ will guide all the projects in their realization until April 2023 and will give impetus to their artistic direction.

This photographic commission is carried by the CRP/, in partnership with the Mission Bassin Minier, with the support of the DRAC Hauts-de-France. In cooperation '.



Clément Brugger

Isabella Hin
© Aurélien
Nobécourt-Arras

Hideyuki Ishibashi

Apolline Lamoril
© Agathe Mouchès

The CRP/

Founded in 1982, the CRP/ Centre régional de la photographie Hauts-de-France in Douchy-les-Mines, labeled «contemporary art center of national interest», is a place of exhibition, support for creation, experimentation, dissemination and mediation working in the field of photography and the contemporary image.

Anchored in its territory and turned towards other artistic scenes abroad, the programming of the CRP/ is based on inviting artists to produce new works, often realized in the framework of research stays or residencies on the territory. It is interested in the plurality of approaches to photography and the image within contemporary artistic practices and in the artists' relationship to social and political space.

This artistic program is complemented by an in situ and off-site cultural program of exhibitions, conferences, film screenings and performances, as well as educational and cultural projects carried out around the works and with the artists.

As a place of support for creation, it has from the outset developed a work of artistic commission with the *Mission Photographique Transmanche* from 1988 to 2006, which founded its collection. This collection has been nourished since then by the programming and productions of the art center. The CRP/ is indeed one of the few art centers with a collection directly linked to its production activity.

The CRP/ has the particularity of having a collection of nearly 15,000 works, an art library, and a library of photographic reference works and artists' books. This collection constitutes an exceptional whole testifying to the diversity and richness of photographic creation for nearly forty years in France and abroad.

The CRP art library offers more than 500 original photographic works, available for loan and accessible to all (individuals, companies, communities...).

CRP/

Centre régional de la photographie
Hauts-de-France
Place des Nations
59282 Douchy-les-Mines / France

+ 33 [0]3 27 43 57 97
communication@crp.photo

www.crp.photo

The CRP/ is supported by:



Partners of the event:



Member of the following networks:

